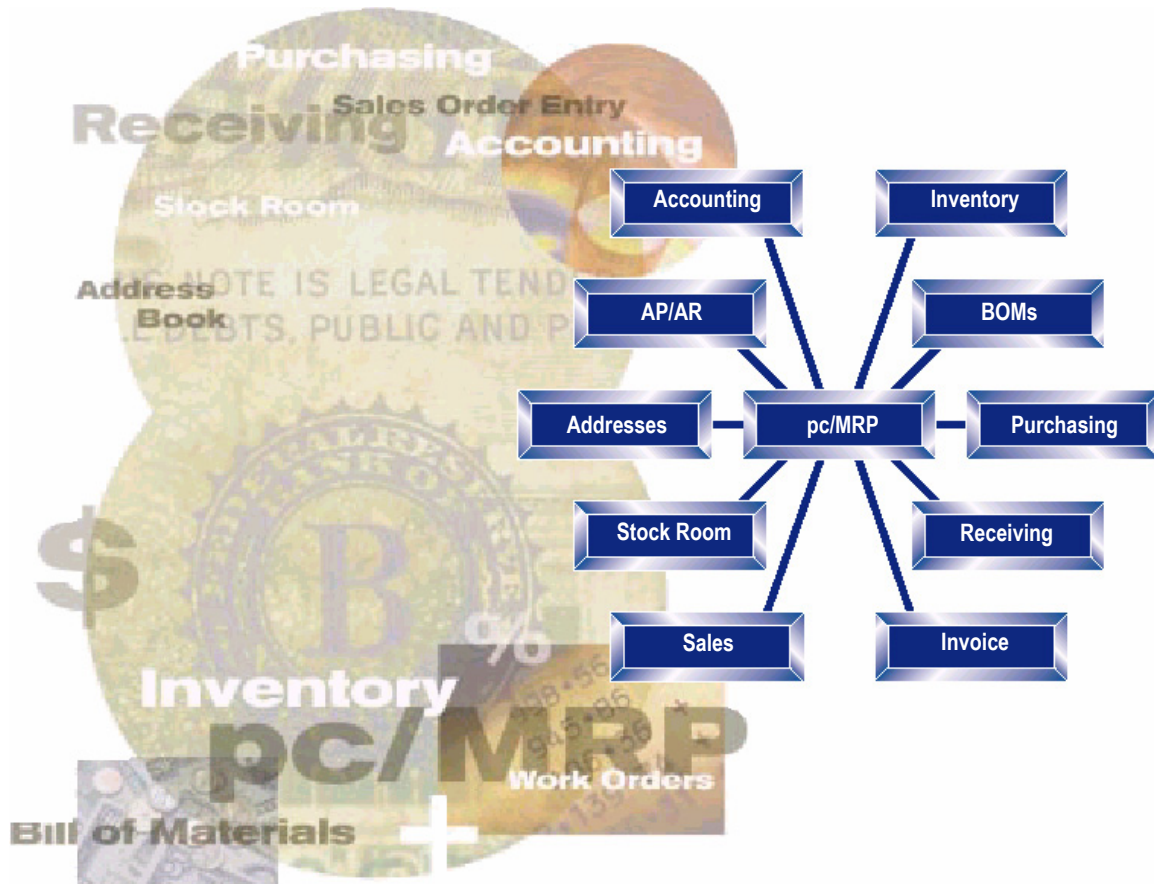


pc/MRP

The complete MRP Inventory Accounting Package



pc/MRP allows companies to implement a **major MRP system** at a reasonable price

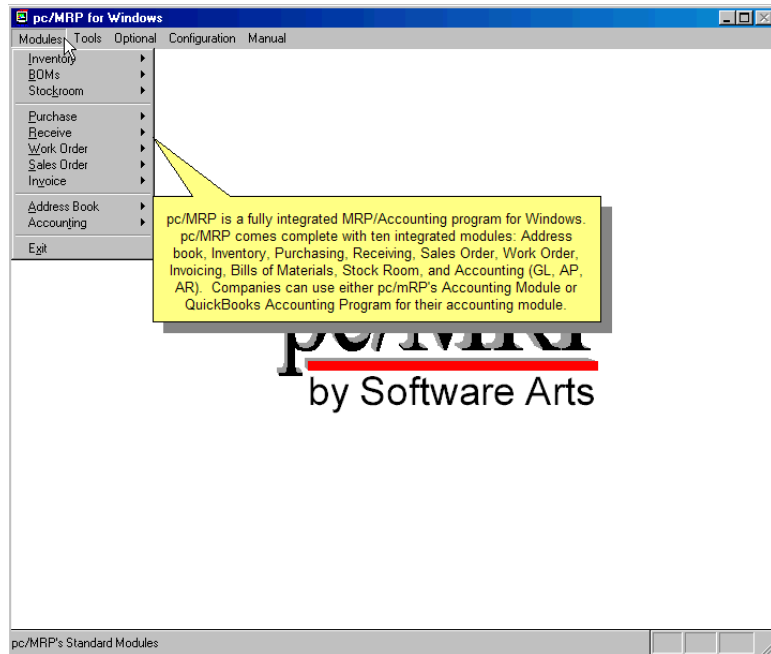
- ISO 9000 Vendor and Customer Performance Reporting
- Hundreds of users can enter, edit, display and print out data simultaneously
- Millions of records per database file without any significant loss in speed
- Manage multi-level indented BOMs (up to 100 levels deep)
- Supports download of internet orders into pc/MRP's sales module.
- Stockroom Module allows accurate issuing and tracking of inventory
- Infinite Bucket MRP Module provides Push Pull, Visual Time Lines, etc.
- Digital Images, Serial/Lot Numbers, Bar Coding, ISO 9000, RoHS, Where Used
- Supports Standard, Average and FIFO Costs, Drill Down Transaction Reporting
- Supports Unlimited Active Accounting Periods, Lockout Dates, Credit & Debit memos
- Compatible with Excel, Access, QuickBooks, UPS, FedEx, and ShopSite
- Inexpensive (less than \$3,000.00 with QuickBooks Interface, Infinite Bucket MRP)

pc/MRP Standard Modules Overview

pc/MRP is a fully integrated MRP/Accounting program for Windows. pc/MRP comes complete with the following ten integrated modules:

- Address book
- Inventory
- Purchasing
- Receiving
- Sales Order
- Work Order
- Invoicing
- Shipments
- Bills of Materials
- Stock Room
- Accounting (GL, AP, AR)

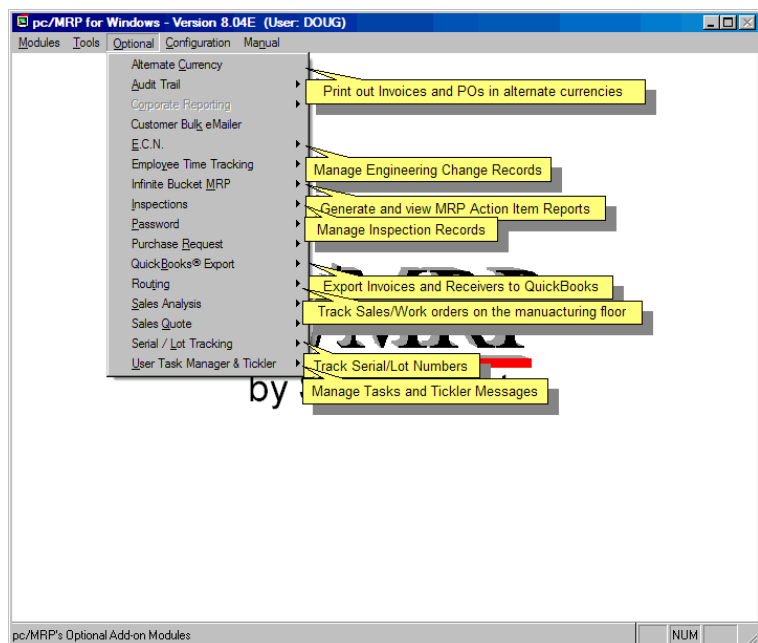
Companies can use pc/MRP's Accounting Module or QuickBooks for their accounting module.



pc/MRP Optional Modules Overview

pc/MRP has sixteen optional modules that can be activated to enhance the efficiency of your company. The optional modules include:

- Alternate Currency
- Audit Trail
- Corporate Reporting
- Customer Bulk Emailer
- Engineering Change Notice
- Employee Time Tracking
- Infinite Bucket MRP
- Inspection
- Password
- Purchase Request/Quote
- QuickBooks Export
- Routing
- Sales Analysis
- Sales Quote
- Serial Lot Tracking
- Task Manager and Tickler



pc/MRP Optional QuickBooks Interface Module

Initially, pc/MRP imports customers, vendors and part numbers from QuickBooks into pc/MRP.

From then on all new customers, vendors, part numbers, bills of materials, stockroom transactions, POs, receivers, sales orders, work orders and invoices are entered into pc/MRP.

pc/MRP invoices and receivers are exported to QuickBooks.

If QuickBooks does not contain the part number, customer, or vendor listed on the invoice or receiver it is also exported into QuickBooks.

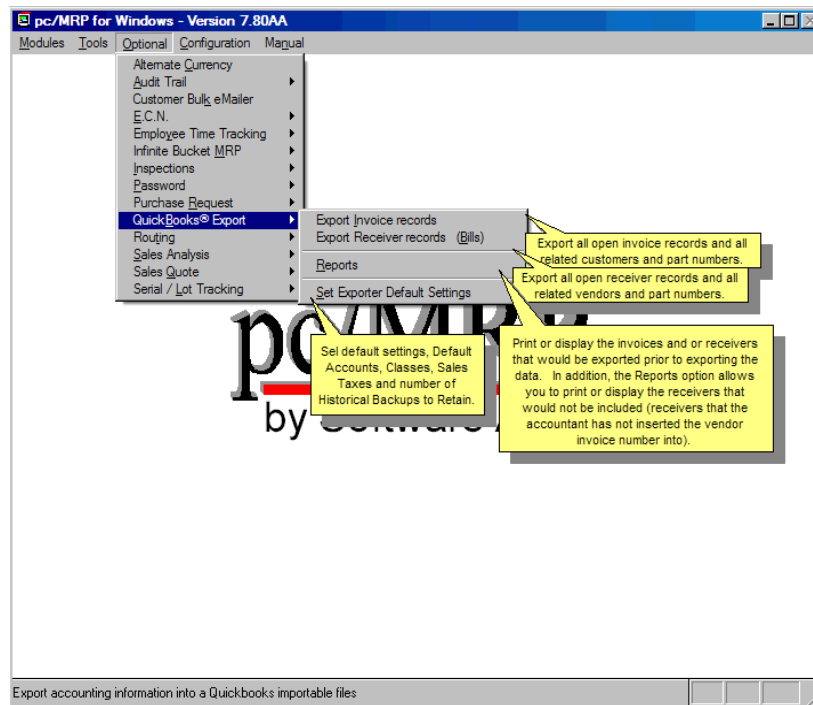
When exporting invoices, pc/MRP debits and credits the following QuickBooks accounts AR, Cost of Goods Sold, Business Income, Inventory, Sales Tax Liability, Freight Income, Sales Discount, Gross Wage Expense and Overhead (if labor is included in the BOM).

When exporting receivers, pc/MRP debits and credits the following QuickBooks accounts AP, Inventory/Expense, and Freight Expense. An accountant must edit a receiver and add the vendor invoice number to it before it can be exported.

pc/MRP is the base program, used to control inventory, generate purchase orders, receivers, work orders, stockroom transactions, sales orders and invoices.

QuickBooks is used as the accounting module to make deposits, pay bills, print financial statements, generate credit and debit memos.

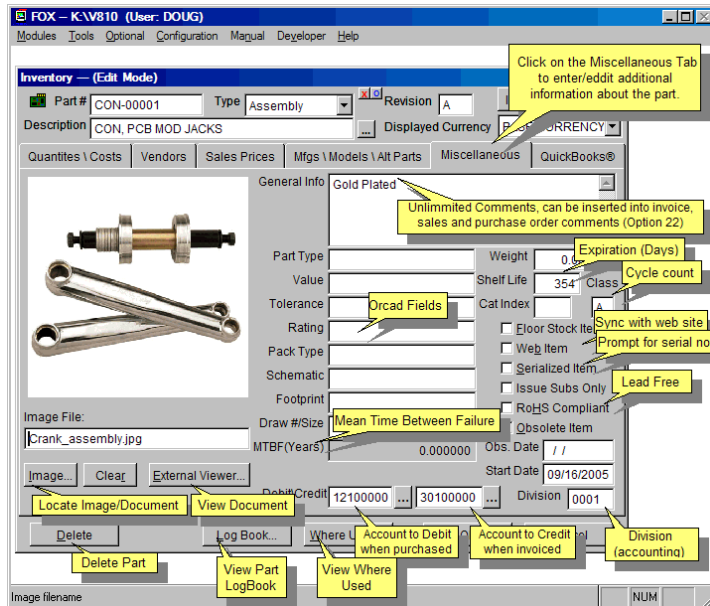
pc/MRP is compatible with the U.S. versions of QuickBooks Pro 2003 and above, Premiere 2003 and above, and Enterprise 2003 and above. pc/MRP supports and is compatible with the following QuickBooks features Classes and Sub-Classes, Accounts and Sub-Accounts, Credit Limits, Lockout Dates, Items and Sub-items, Single and Multiple Tax Vendors.



pc/MRP Inventory Module

pc/MRP's Inventory Module contains the costs, price qty breaks, on hand qtys, WIP qtys and other vital information for each part number. Advanced features include:

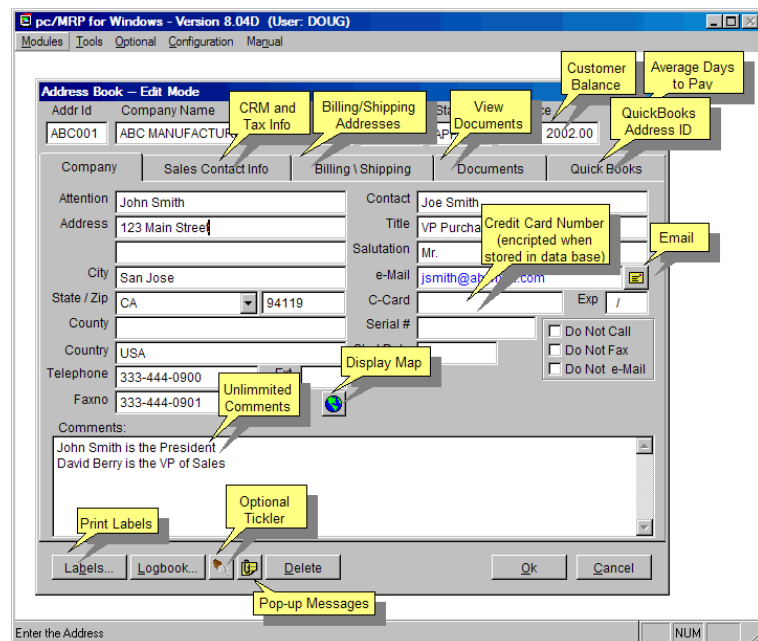
- Digital images/Documents
- Average, Std, FIFO costing
- Vendor price qty breaks
- Customer price qty breaks
- Price qty breaks from WEB
- Cycle counts
- Physical inventories
- Inventory value for any date
- Mean Time Between Failure
- Where used
- Serial Lot Numbers
- Inspection Criteria
- WEB Store Synchronization
- Alternate Currency
- RoHS (lead free)
- Outside and Inside Labor
- QuickBooks PN, Accounts



pc/MRP Address Book Module

pc/MRP's Address Book Module contains vital customer/vendor information. Advanced features include:

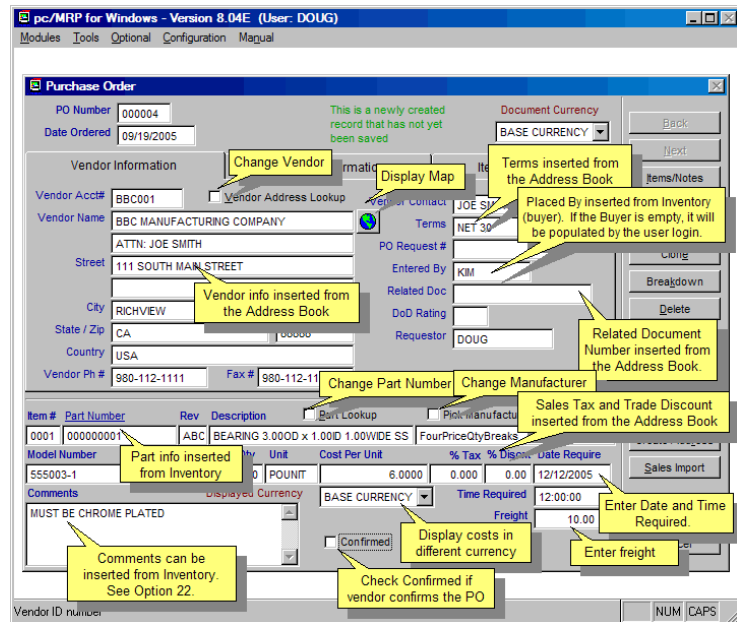
- Large 6 Line Addresses
- Billing/Shipping/Remittance
- Pop up messages
- Optional Tickler
- Display Map
- Email
- Encrypted Credit Card #s
- Unlimited Comments
- Customer balance
- Average days to pay
- View/Print any Document
- QuickBooks ID
- CRM Information
 - Source
 - Salesman
 - Territory/Region
 - Credit Limit



pc/MRP Purchasing Module

pc/MRP's Purchasing Module allows users to enter, edit, duplicate and print out purchase orders and reports. pc/MRP's Purchasing Module supports the following advanced features:

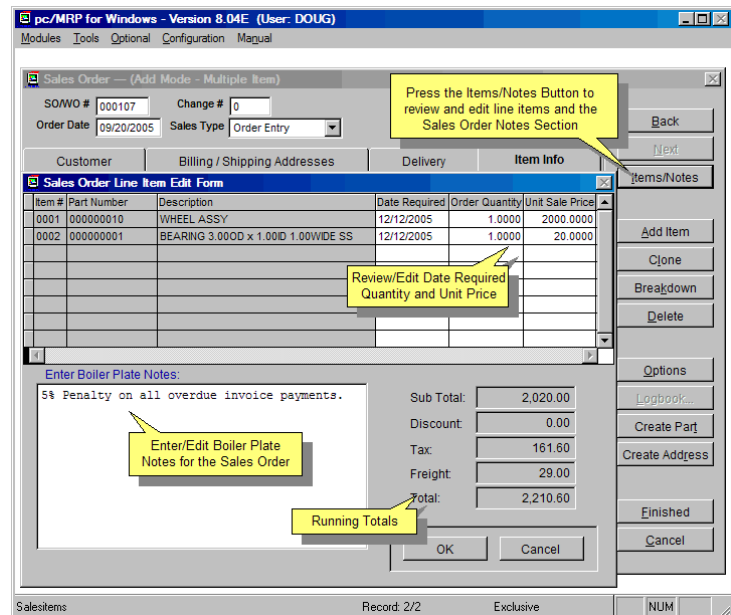
- Display/Print/Fax/Email
- Blanket Purchase Orders
- Large 6 Line Addresses
- Remittance Address
- Selectable Terms/Conditions
- Unlimited Comments/Line Item
- Custom Boiler Plate
- Duplicate PO Option
- Audit On-order quantities
- Auto select price/qty break
- Display Map
- Optional Tickler, Alt Currency
- Over 100 Reports including:
 - ISO 9000 Vendor
 - PPV
 - Optional Push Pull



pc/MRP Sales Order Module

pc/MRP's Sales Order Module allows users to enter, edit, duplicate and print out sales orders and reports. pc/MRP's Sales Order Module supports the following advanced features:

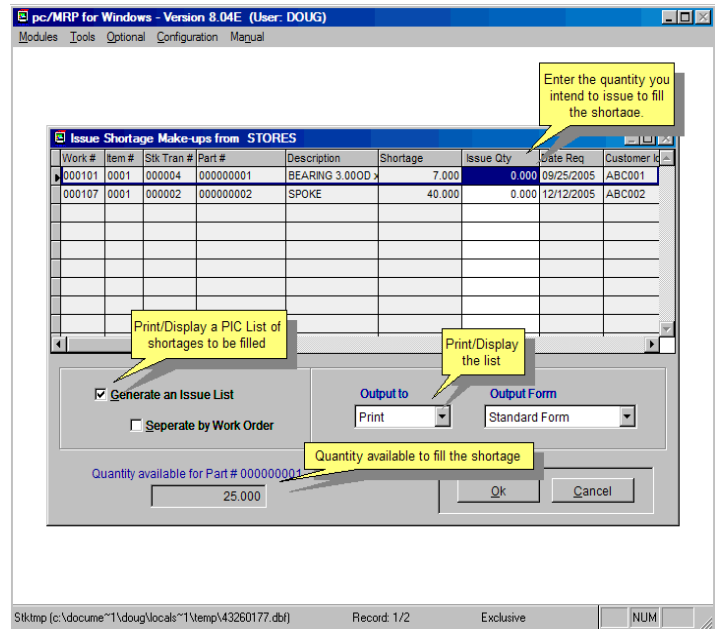
- Display/Print/Fax/Email
- Blanket Sale Orders
- Large 6 Line Addresses
- Bill to, Ship to Addresses
- Unlimited Comments/Line Item
- Custom Boiler Plate
- Duplicate Sales Order Option
- Audit On-demand quantities
- Auto select price/qty break
- Display Map
- Supports download of internet orders
- Over 100 Reports including:
 - ISO 9000 Customer
 - Open Back Order
 - Sales Commissions
 - Cost of Sales



pc/MRP Stockroom Module

pc/MRP's Stockroom Module is used to issue parts/sub-assys to sales and work orders and receive back the completed assemblies from manufacturing. pc/MRP's Stockroom Module supports the following advanced features:

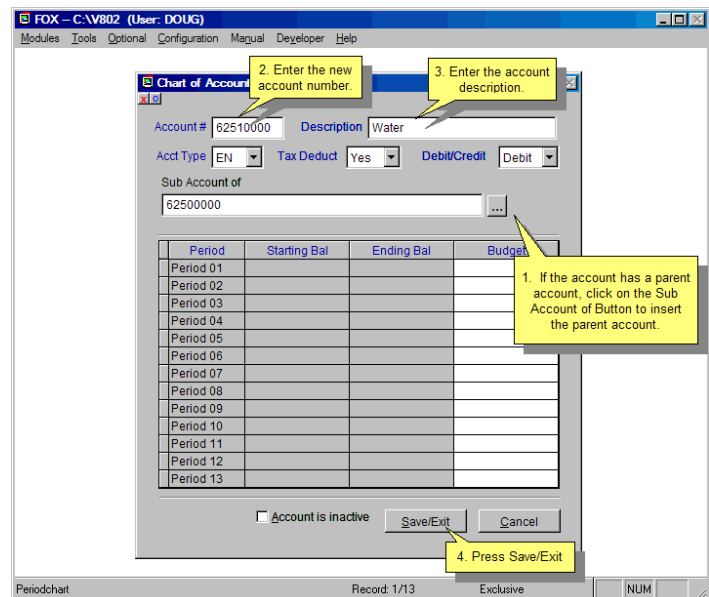
- Issue Assys/Parts to mfg
- Receive back completed Assys
- Receive back partial quantities
- Track shortages
- Issue makeup shortages
- Transfer between areas
- Check Availability Option
- Convert Parts to Assys Option
- Max Potential Build Option
- Adjust Bin Qtys during Issue
- Receive back unused parts
- Adjust on hand quantities
- Handles breakage
- Handles parts not on BOM
- Audit WIP Option



pc/MRP Accounting Module

Companies can use pc/MRP's Accounting Module or QuickBooks for their Accounting Module. pc/MRP's Accounting Module supports the following advanced features:

- Multilevel Chart of Accounts
- Lockout Date
- Month/YTD Budget w Variance
- Re-close/Reprint Prior Periods
- Divisions/Department
- Credit & Debit Memos
- Electronic Funds Transfers
- Drill Down Option
- Check Reconciliation
- Cash Projections
- Cost of Sales
- Average/Std/FIFO Costing
- Automatic Debiting/Crediting
- Periodic/Perpetual Inventory



pc/MRP Invoice Module

pc/MRP's Invoice Module allows users to enter, edit, and print out invoices, shippers, labels and invoice reports. pc/MRP's Invoice Module supports the following advanced features:

- Display/Print/Fax/Email Invoices
- Invoice partial Sales Order Qtys
- Large Bill to Ship to Addresses
- Unlimited Comments/Line Item
- Custom Boiler Plate
- Display Map
- Optional Tickler, Alt Currency
- Each line item can contain unique:
 - Tax Rate
 - Discount
 - Due Date
 - Salesman
 - Sales Commission

The screenshot shows the 'Creating a New Invoice' window in pc/MRP. Key fields include Invoice # (000004), Invoice Date (09/29/2005), Pay Date (10/26/2005), Customer (ABC MANUFACTURING), and Address (123 MAIN STREET). The Item Information section shows a line item for 'FINISHED GOODS, IO CHASIS' with a quantity of 1,000. Callouts indicate that the Pay Date is calculated from the sales order's terms, that an alternate currency module is required for certain currencies, and that a map can be displayed for the address. A note also states that pc/MRP will insert a 'Y' in the Complete field when the invoice line item is paid.

pc/MRP Receiving Module

pc/MRP's Receiving Module allows users to enter, edit, and print out receivers, labels and receiver reports. pc/MRP's Receiver Module supports the following advanced features:

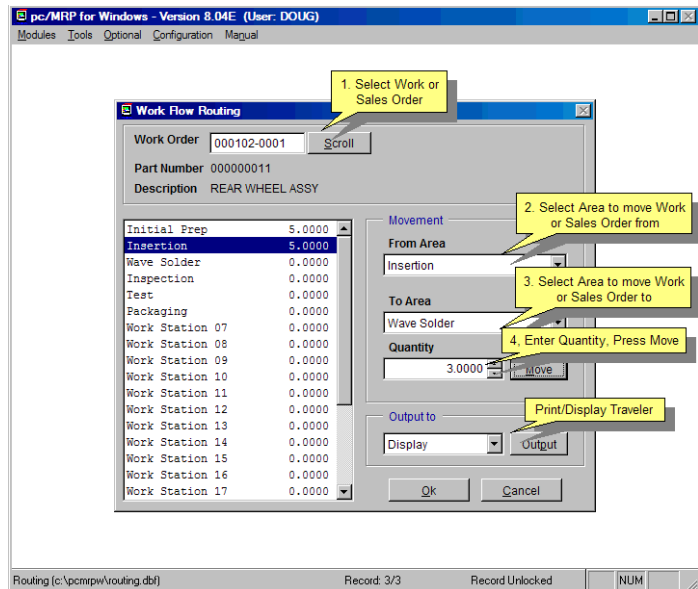
- Display/Print/Fax/Email Receivers
- Receive partial PO Quantities
- Large 6 line Addresses
- Unlimited Comments/Line Item
- Display Map
- Optional Tickler, Alt Currency
- Each line item can contain unique:
 - Tax Rate
 - Discount
 - Due Date

The screenshot shows the 'Creating a New Record' window in pc/MRP. Key fields include Receiver # (000002), PO # (000004), Date Received (09/27/2005), and Vendor Information (BBC MANUFACTURING COMPANY). The Item Information section shows a line item for 'BEARING 3.000D x 1.000D' with a quantity of 100,000. Callouts indicate that information is automatically entered from the PO, that a map can be displayed for the vendor address, and that additional comments like weight and condition can be added. A note also states that pc/MRP will prompt for a serial lot number if the optional module is used.

pc/MRP Optional Routing Module

pc/MRP's Routing Module allows users to track the location of sales/work orders on the manufacturing floor. pc/MRP's Routing Module supports the following advanced features:

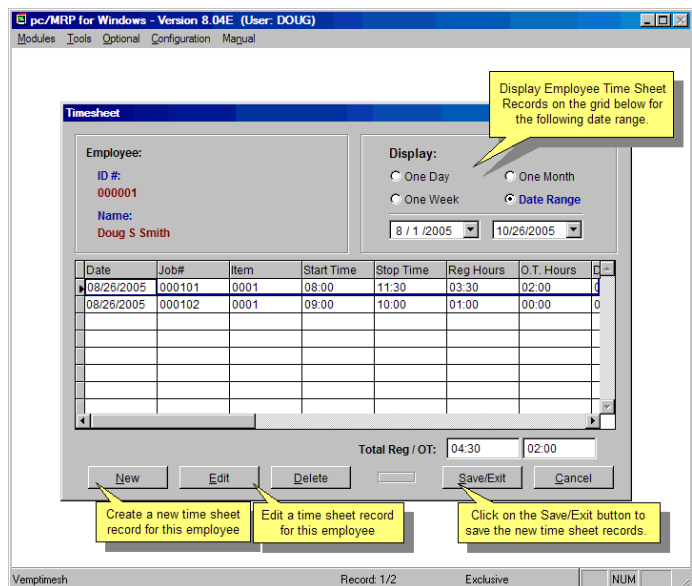
- Up to 25 user definable work areas.
- Issuing parts to manufacturing for a sales/work order automatically creates a routing record.
- Moving product into the finished goods area automatically increments the onhand quantity of finished goods and decrements WIP quantities



pc/MRP Optional Employee/Time Sheet Module

pc/MRP's Employee/Time Sheet Module allows companies to track the actual labor cost of sales and work orders. pc/MRP's Employee/Time Sheet Module supports the following advanced features:

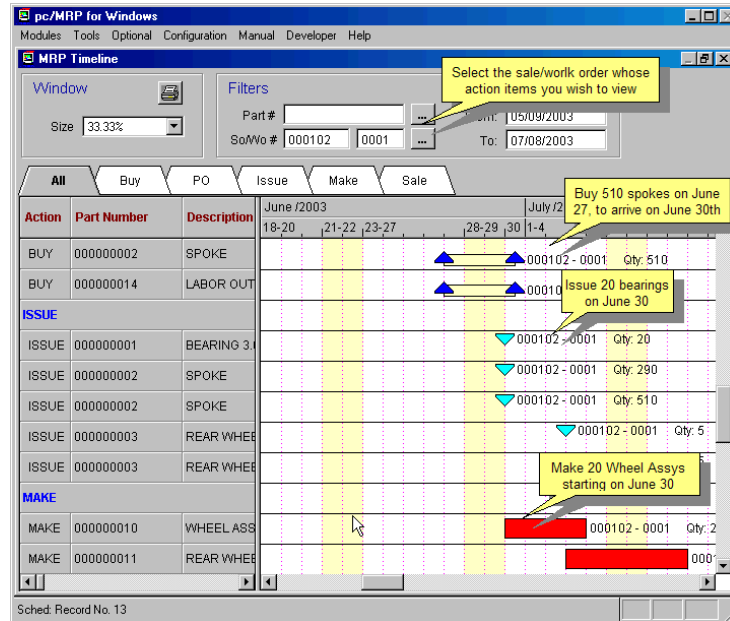
- Accounting can create and manage employee records for pay rates, date hired, vacation hours, sick hours, state, and federal withholding \$ amounts.
- Accounting and or individuals can create and manage employee time sheets.
- Accounting can print out actual labor hours and costs for a sales/work order from the time sheet report module.



pc/MRP Optional Infinite Bucket MRP Module

pc/MRP's Infinite Bucket MRP Module allows users to generate MRP Action Items (PO, Buy, Issue, Make, Sale) and generate MRP Reports. Advanced features include:

- Push Pull Reports
- Sales Quotes w probabilities
- Visual Time Line Reports
- Consumable Work Orders
- Dedicated Work Orders
- Auto PO Creation Option
- PO/Buy reports by Buyer
- Machine/Labor hours
- Visual Purchasing Graphs
- Recommends best vendor
- Consolidated reports
 - Daily
 - Weekly
 - Monthly
 - quarterly



pc/MRP Optional Inspection Module

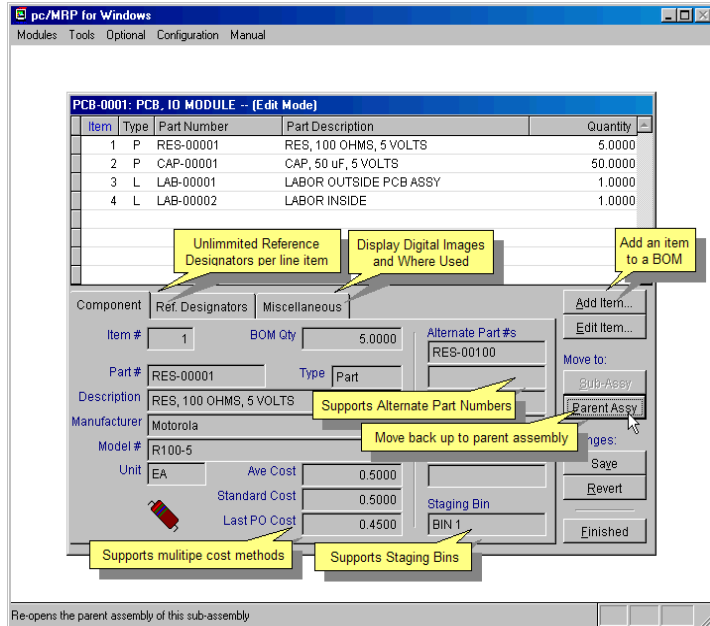
pc/MRP's Inspection Module allows users to create global inspection requirement by:

- Editing a part or assembly
- Clicking on the Inspection Criteria button
- Specifying when an inspection record will be created and displayed (received, manufactured, invoiced or shipped)
- Specifying what criteria will be used to inspect it.
- View, edit and print inspection records
- Print and or display inspection reports

pc/MRP Bills of Materials Module

pc/MRP's Bills of Materials Module allows users to enter and edit bills of materials up to 100 levels deep. Users can print out Where Used Reports, Costed, Uncosted, Exploded, and Single Level BOMs. pc/MRP's Bills of Material Module supports the following advanced features:

- Digital images
- Drill down/up thru BOMs
- Where used reports
- Alternate Part Numbers
- Costed/Uncosted BOMs
- Exploded/Single Level BOMs
- Exploded/Single Level PIC List
- Staging Bins
- Average/Std/Last PO Costs
- Phantom BOMs
- Inside Labor Items
- Outside Labor Items
- Cost Roll Up (Ave, Std, Last)
- Unlimited Reference designators
- Mean Time Between Failure



Minimum Requirements:

Windows 98 or higher
 256 MB RAM
 CD ROM or Internet Connection

pc/MRP QuickBooks Advisor/Client Training

Dave Zich, Desertview 800-277-0039
 Pat Carson, Carson & Crew 408-445-6100

Reseller Program Available

pc/MRP Sales Software Arts Inc.

6830 Via Del Oro, Suite 109
 San Jose CA 95119-1353
 Phone: 408-226-7321
 Fax: 408-226-8435
 Website: www.pcmrp.com
 e-mail: sales@pcmrp.com